



*Optional Carolina Partial Brick Front*



*Optional Carolina Partial Stone Front*

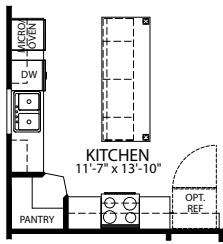


*Optional Siding Front*

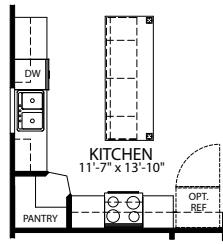


- 3 Bedrooms
- 2 Bathrooms
- 2 Car Garage
- 1,704 Finished Sq. Ft.

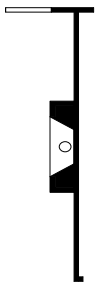




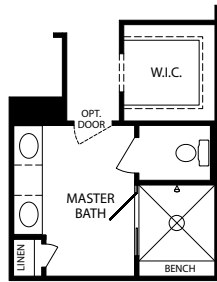
OPT. CHEF'S KITCHEN



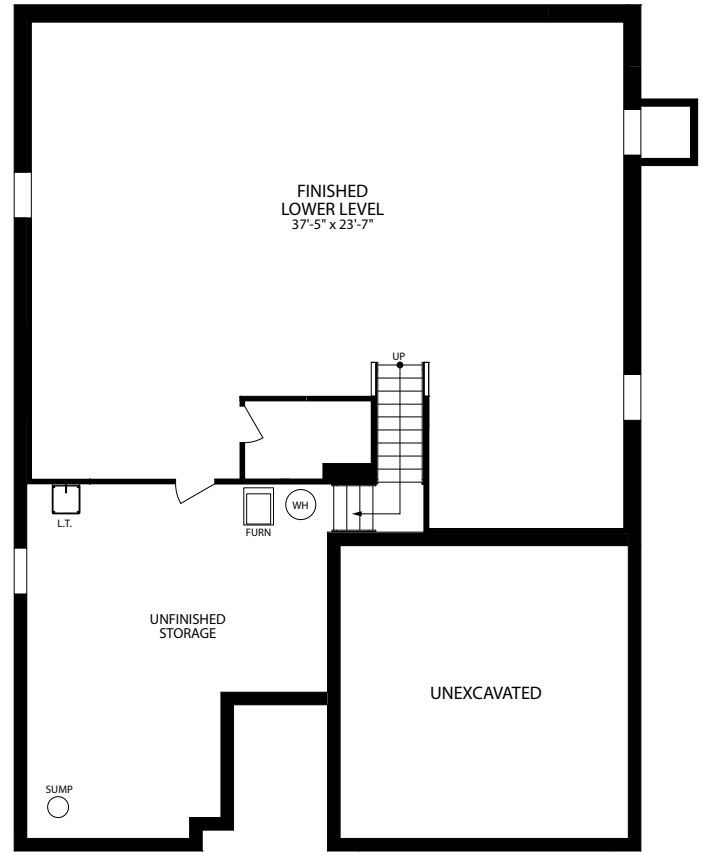
OPT. EXTRA ISLAND KITCHEN



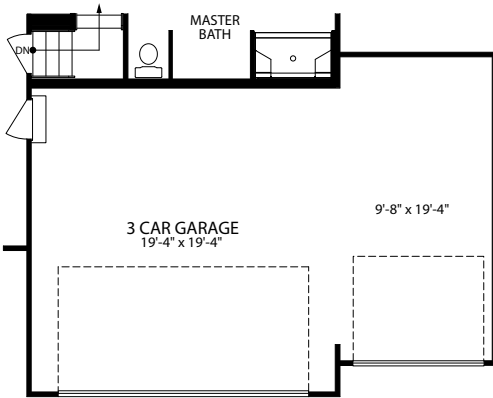
OPT. FIREPLACE



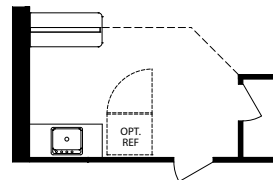
OPT. UPGRADED MASTER BATH



FINISHED LOWER LEVEL



OPT. 3 CAR GARAGE

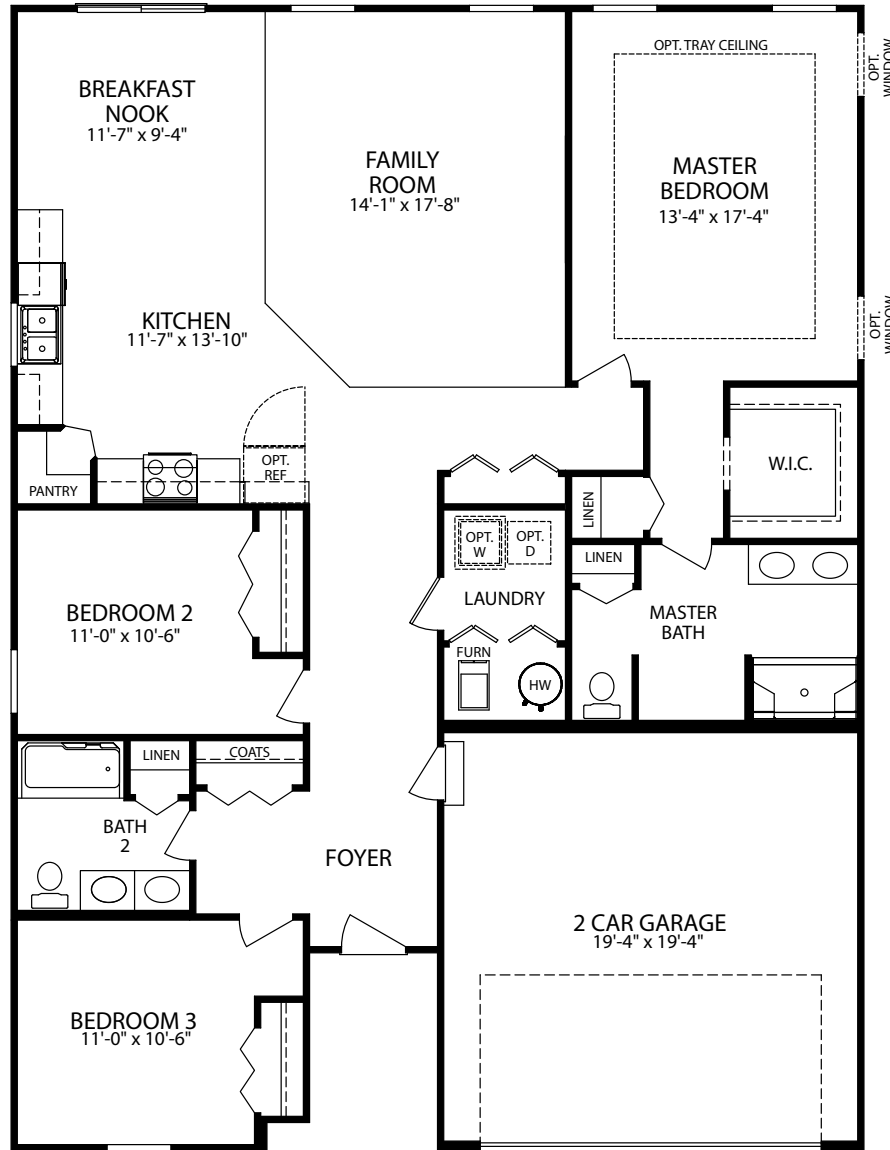


OPT. SOCIAL CENTER



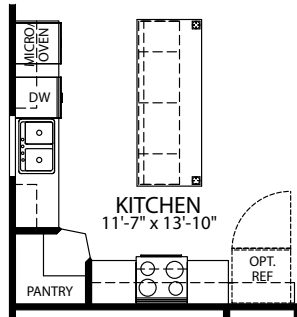
OPT. SHOWER BATH



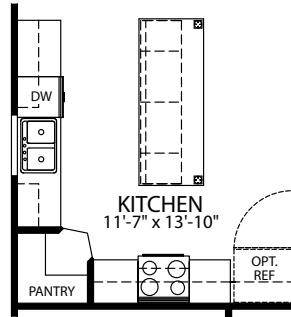


- 3 Bedrooms
- 2 Bathrooms
- 2 Car Garage
- 1,704 Finished Sq. Ft.

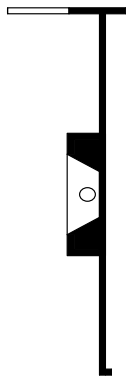




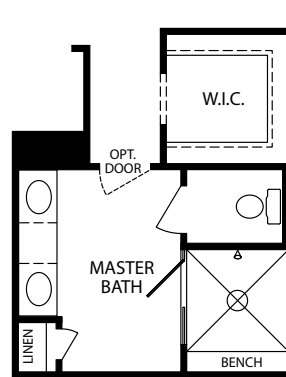
OPT. CHEF'S KITCHEN



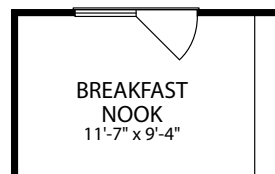
OPT. EXTRA ISLAND KITCHEN



OPT. FIREPLACE



OPT. UPGRADED MASTER BATH



OPT. 28 PATIO DOOR